

#smartconnection

Telecom Solution



Hybrid Power & Data Solution

www.aginode.net



Hybrid Power & Data solution

The hybrid solution is especially designed for small cells, but can also be used for WLAN access points, video surveillance, remote access control and other remote sensors. It can also power the Fibre To The Office switches of the LANactive range.

The hybrid solution is designed for indoor/outdoor installations to connect active devices to data networks and bring energy to these devices when local power is not easily available.

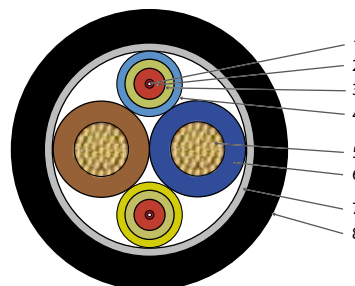
The 2-in-1 hybrid design avoids having to install two different cables. The small 8.4mm diameter of the hybrid cable reduces the required space compared to two individual cables.

Benefits of the hybrid cable

- Easy to strip
- Copper wires and fibres can be conveniently separated
- Individual fibres are well protected by aramid yarns in an individual LSZH jacket
- Fibres terminated by splicing in a hybrid termination box after splitting away the copper wires
- The cable can be installed both indoor and outdoor
- Superior CPR performance (B2ca): can be installed indoor into locations that require high level of fire performance like metro stations and hospitals
- Cable for outdoor installation with UV resistance outer jacket and water blocking tape

Cable design

- 1 Single mode or multimode G.657.A2 optical fibres
- 2 Coating - Ø 0.9mm
- 3 Aramid yarns reinforcement
- 4 Halogen free flame retardant sheath Ø2.0mm
- 5 1.5mm² annealed stranded bare copper
- 6 Halogen free flame retardant insulation Ø2.9mm
- 7 Water blocking tape
- 8 Halogen free flame retardant black sheath Ø8.4mm UV resistant



Hybrid Termination Box



The hybrid box's smart design separates the copper wires and fibres for efficient cable management.

The copper wires are directed through a tube, leading directly to the active device, while the fibres are expertly terminated inside the box and connected to adaptors.

This configuration allows for easy patching of an upgraded active device without the need for re-terminating cables.



The hybrid solution is completed with a panel developed to receive and connect hybrid cables consisting of fibre optic and power cables.

This 1U panel features a sliding tray for convenient and secure access to the cable termination points. The quick-connect design simplifies and speeds up hybrid cable connection.

Fibre splice cassettes improve the organization and protection of the fibre cores during splicing. This improves the reliability of data transmission within a building or even outdoors.

Smart city - Hybrid solution application

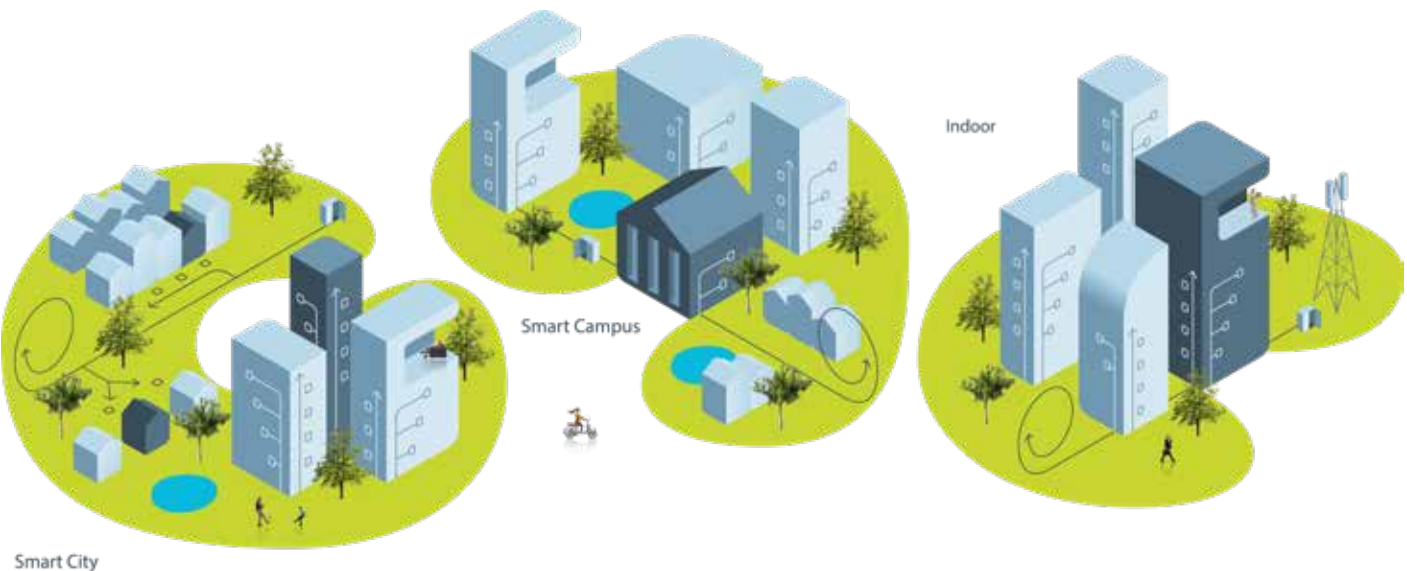
- Smart cell
- Outdoor IP security video surveillance
- External IOT sensor : as air quality control, car traffic control
- Street lighting management
- Smart grid control and management

Smart campus - Hybrid solution application

- Smart cell
- Outdoor IP security video surveillance
- External IOT sensor

Indoor - Hybrid solution application

- WLAN access point
- 5G indoor antenna
- FTTO switch connection



#smartconnection



Connect via **LinkedIn**



Learn more on **YouTube**



Visit **www.aginode.net**

Contact us via
info@aginode.net

www.aginode.net

