

#smartconnection



LANactive DICE

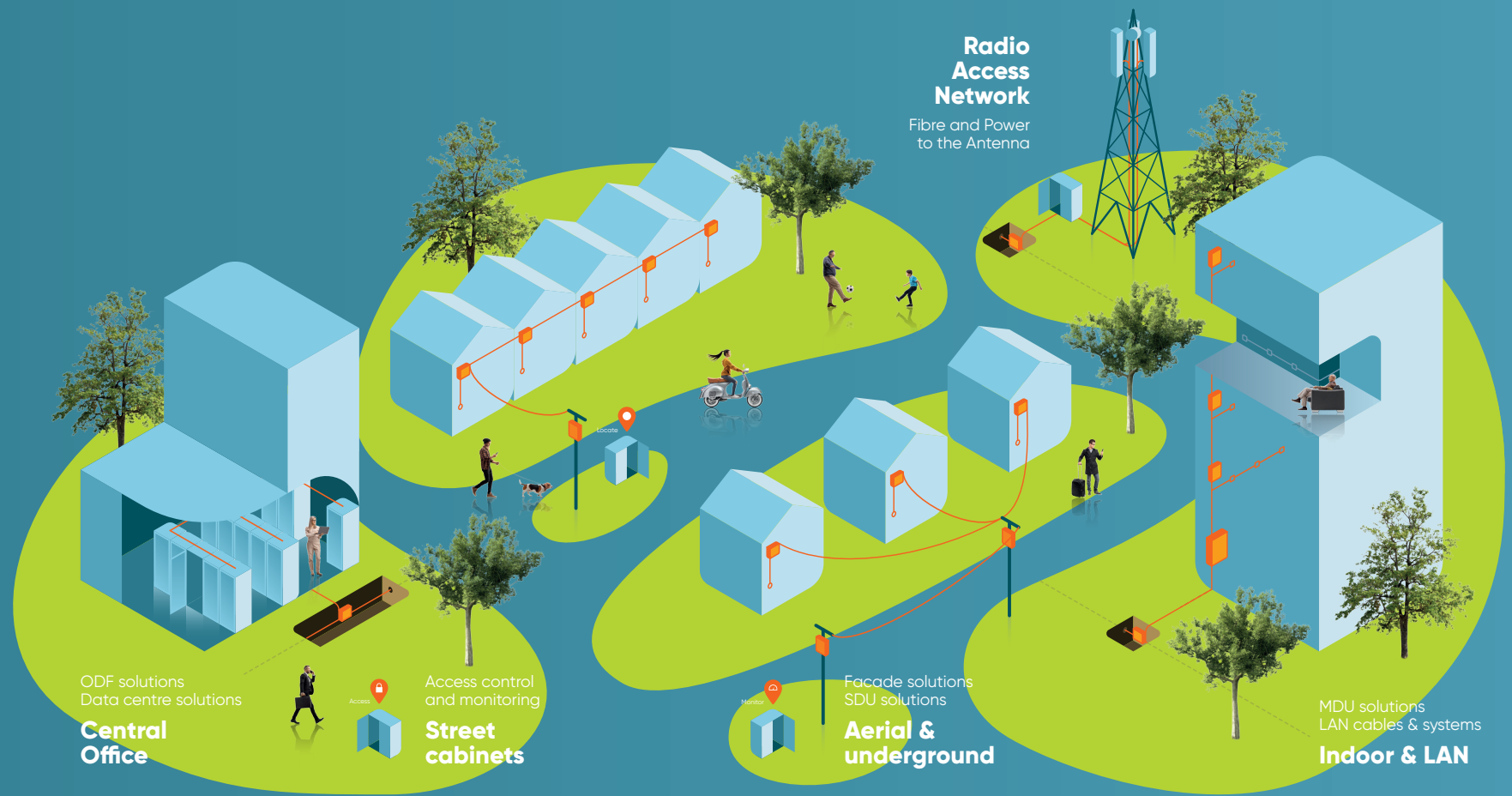
Catalogue

www.aginode.net



Table of content

Make #smartconnections with Aginode	3
Boost efficiency, reduce energy usage and be ready for tomorrow!	4
XGigaSwitch DICE	6
WiFi 6 as Technology Driver for XGigaSwitch DICE	7
Bandwidth as Technology Driver for XGigaSwitch DICE	7
LANactive FTTO & DICE	8
LANactive Manager	9
Product overview	10
• XGigaSwitch DICE	10
• iOption	11
• LANactive Manager	11
• Memory Cards	11
• Transceiver	12
• Console Cable	12
• Power Supply, Power Cable	13
• Mounting Kit Power Supply	13
• 19" Mounting Kit, DIN-Rail Mounting Kit	14
• Mounting Plate, Strain-relief	15
• Mounting Frame, Cable Protection	16
• LANmark Snap-In Adaptor, LANmark-OF Pigtails	17
• LANmark-OF Splice Cassette	18
• WAGO/Wieland Power Connector	18
• WAGO and Wieland Power Connecting Cable	18



Make #smartconnections with Aginode.

Aginode, formerly Aginode Telecom Systems, designs & manufactures connectivity solutions for digital networks in FTTx, Mobile, LAN & Data Centre markets. Our goal: to enable the infrastructure which delivers applications that make lives more connected, productive, and enjoyable; today and in future.

Our international teams have over 30 years proven track record of developing, implementing, and servicing advanced infrastructure solutions, with Aginode's diverse product range under our brand names:

- **LAN & Data Centres:** LANmark™, LANsense™, LANactive
- **FTTx & Mobile:** XPLOER™, BRIGHTBOX™, INFRABIRD™, UPSKY™

With a state-of-the-art industrial footprint and recognised technological know-how in Europe, Middle East, North-West Africa, and Asia, Aginode is a key player in digitalisation and connectivity.

Boost efficiency, reduce energy usage and be ready for tomorrow!

A growing number of IoT (Internet of Things) devices are demanding ever more powerful IT networks. Bandwidth requirements are increasing rapidly (so do power & data), owing to more devices being connected to networks and more cloud applications and mobile devices being used.

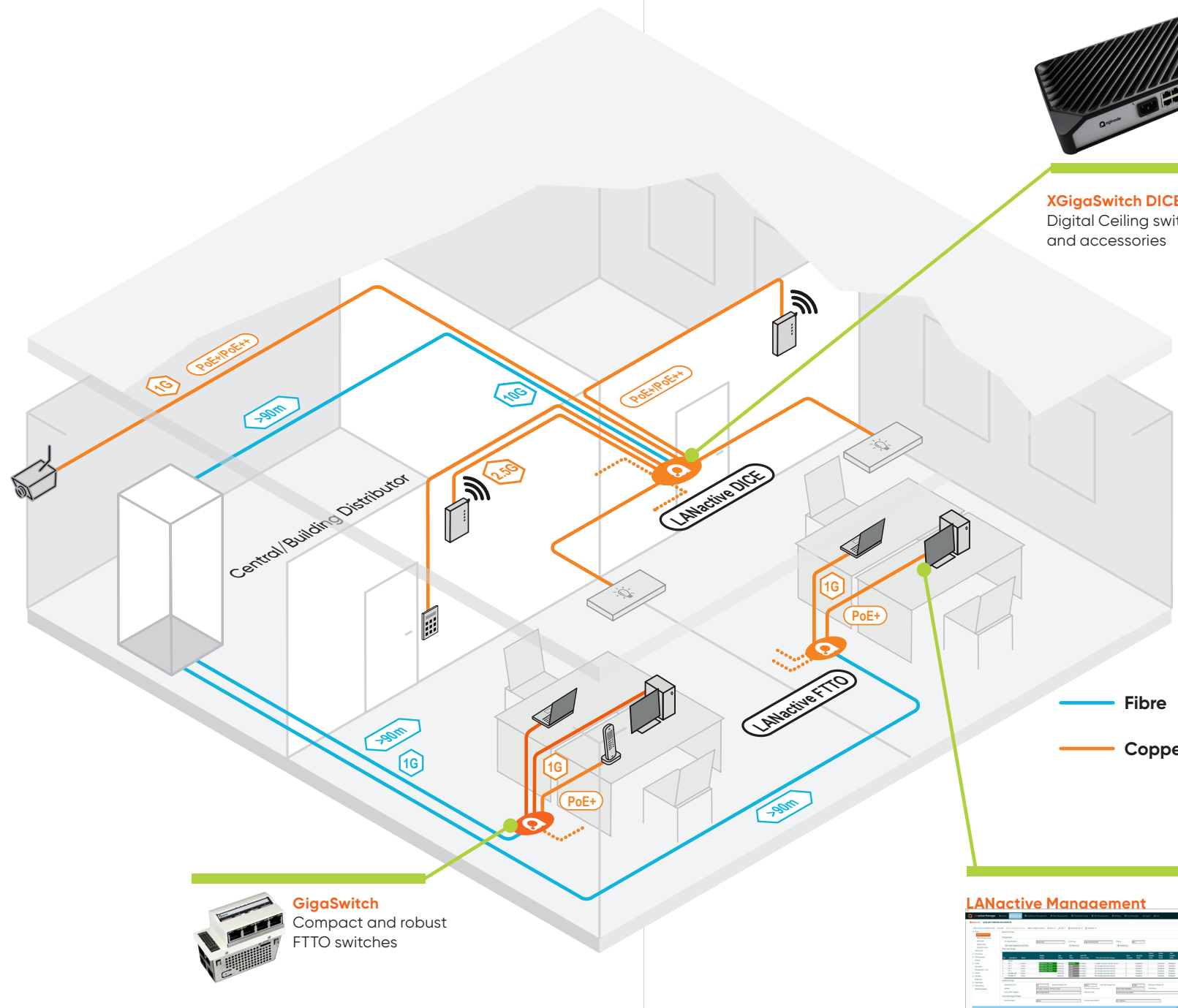
Today, with the latest Wireless LAN standards the available bandwidth at the access level increases again and established network connections are reaching its limits. This makes it necessary to think about new technologies to transport the upcoming data traffic.

In addition to the Wireless LAN application, smart building systems are being increasingly integrated into the IP network. In this case, it is not bandwidth that is typically to the fore, but instead the provision of data and power, supporting applications like connected lighting, smart sensors and heating, air conditioning and security systems.

To implement and manage all this in a cost and resource efficient way, while ensuring the IT networks flexibility, Aginode has developed a "Fibre in the Digital Ceiling" concept.

Basically, a data/power/control network is connected throughout an entire building via an overhead honeycomb configuration, offering a significant number of (powered) connection points. This way, devices can be linked to building automation. Network switches, sensors, controls, WLAN access points and other distributed building services are simply plugged in and immediately powered and connected to the network.

The core component is the new Aginode LANactive Ethernet switch "DICE".



"DICE" is optimized for a smooth installation in the digital ceiling. Based on a modern design it can be integrated seamlessly into the smart building of tomorrow.

Advantages of LANactive DICE

- Meets current and future network requirements of smart buildings
- Scalable upgrading of existing and new network infrastructures
- Fibre based technology to serve future requirements of security, high bandwidth and energy savings
- Fast and flexible provisioning of data and services (WLAN) exactly where they are needed
- Sustainable and cost-efficient management and maintenance of the network

Features

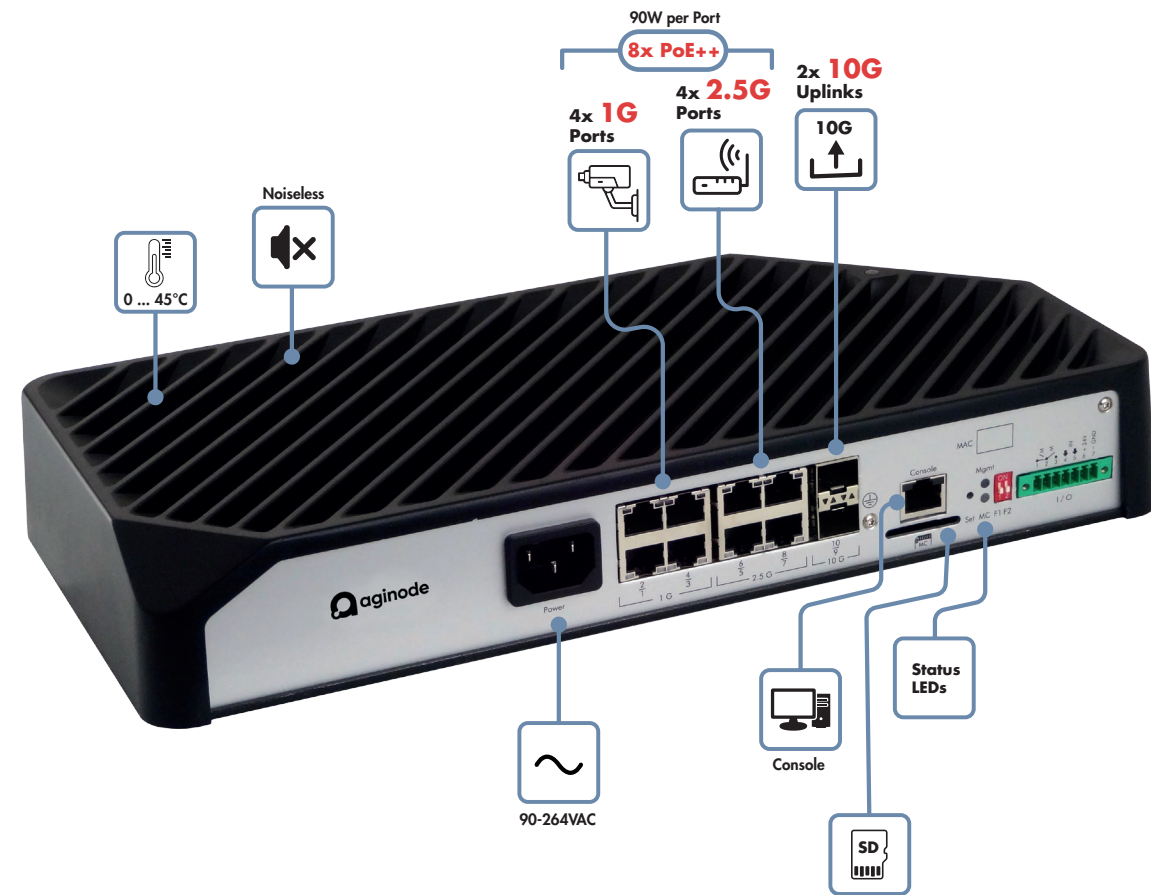
- 2x 10 Gbps SFP+ uplinks
- 4x MultiGigabits access ports for connection of bandwidth consuming applications
- 4x Gigabit access ports for connecting further IP equipment such as monitoring cameras, intelligent lighting or building systems (Smart Building)
- Access ports are featured with PoE++ with up to 90W

In conjunction with the established LANactive FTTO concept, a maximum performance and flexibility of the IT infrastructure can be achieved, in a way that enhances user experience while reducing energy usage.

Aginode recent product innovation "DICE" is a major step towards further developing the companies new product platform supporting high bandwidth (10G) and smart building applications.

XGigaSwitch DICE

LANactive XGigaSwitch is optimized for supporting Wireless LAN infrastructures. Based on MultiGigabit and 10 Gigabit SFP+ interfaces the switch is able to support the bandwidth required by the latest Wireless LAN standards.



Access Ports

The XGigaSwitch has eight Access Ports connecting Wireless LAN Access Points, IP Cameras, Connected Lighting or Smart Building Systems. Four Access Ports supporting MultiGigabit to avoid any bottleneck with the latest WLAN technology standards.

Ceiling Installation

The very compact design allows various mounting options and is honoured with the reddot design award. In combination with the fanless design and the noiseless operation the installation can be e.g. in offices or in visible areas.

Power over Ethernet

The latest Power over Ethernet standard IEEE802.3bt enables the remote powering with up to 90W per port. Equipment like Wireless LAN Access Points, IP-Cameras, Connected Lighting or Smart Building Systems can be supplied with power from the switch directly. The Power over Ethernet functionality can be parametered, controlled and monitored via management.

Memory Card

The optional memory card automatically saves the complete current configuration and firmware of the device. In case of failure, this feature allows an easy exchange of the hardware without additional configuration. In addition, each memory card can be delivered with its own MAC address that is adopted by the switch.

Switch Management and Zero-Touch Configuration

Aginode LANactive Manager allows a simple and secure configuration of all device parameters of the XGigaSwitch series. With the LANactive Manager a larger number of XGigaSwitches can be managed and monitored at the same time. In combination with Aginode Zero-Touch Configuration, the LANactive Manager allows automatic distribution of configurations and firmware updates. A pre-configuration of the switches is not necessary.

WiFi 6 as Technology Driver for XGigaSwitch DICE

The latest WiFi standard IEEE802.11ax called WiFi 6 is optimized for crowded areas and parallel communication between access points and end devices. It is based on OFDMA (Orthogonal Frequency-Division Multiplexing) technology and uses the 2.4GHz, 5GHz and with the extension WiFi6e also in the 6GHz band. To archive 1,024 QAM modulation means that the signal quality must be increased between source and destination. This can be achieved by working with smaller radio cells what result in a higher quantity of access points in the same area. The following table shows the main differences WiFi 5 and WiFi 6.

IEEE 802.11ax (WiFi 6)

- Increasing bandwidth and efficiency (OFDMA)
- Designed for crowded areas
- Increasing bandwidth requires better signal quality
- Decreasing the radio cell
- Uplink bandwidth > 1 Gbps is recommended (IEEE 802.3bz)
- Increasing power consumption requires PoE++ (IEEE 802.3bt)

	2013	2020
	IEEE 802.11ac	IEEE 802.11ax
Frequency	5 GHz	2.4, 5 and 6 GHz
Modulation	256-QAM	1024-QAM
Max. data rate (20MHz and 2SS)	173.3 Mbps	286.8 Mbps
Max. data rate (40MHz and 2SS)	400 Mbps	573.5 Mbps
Spatial Streams	8	8

Bandwidth as Technology Driver for XGigaSwitch DICE

The Gigabit Ethernet standard came into use in 1998 and is until today the most common and used access transmission technology in Local Area Networks (LAN). Between 1 and 10 Gigabit Ethernet, the Multigigabit standard was approved in 2016 and supports 2.5 Gigabit Ethernet and 5 Gigabit Ethernet. The main advantage of the 2.5 Gigabit standard is that there is no need in refurbishing the cabling infrastructure, because it works also with a CAT5e infrastructure. The main application for Multigigabit are the latest WiFi access points.

The following table shows an overview of the Gigabit transmission technologies.

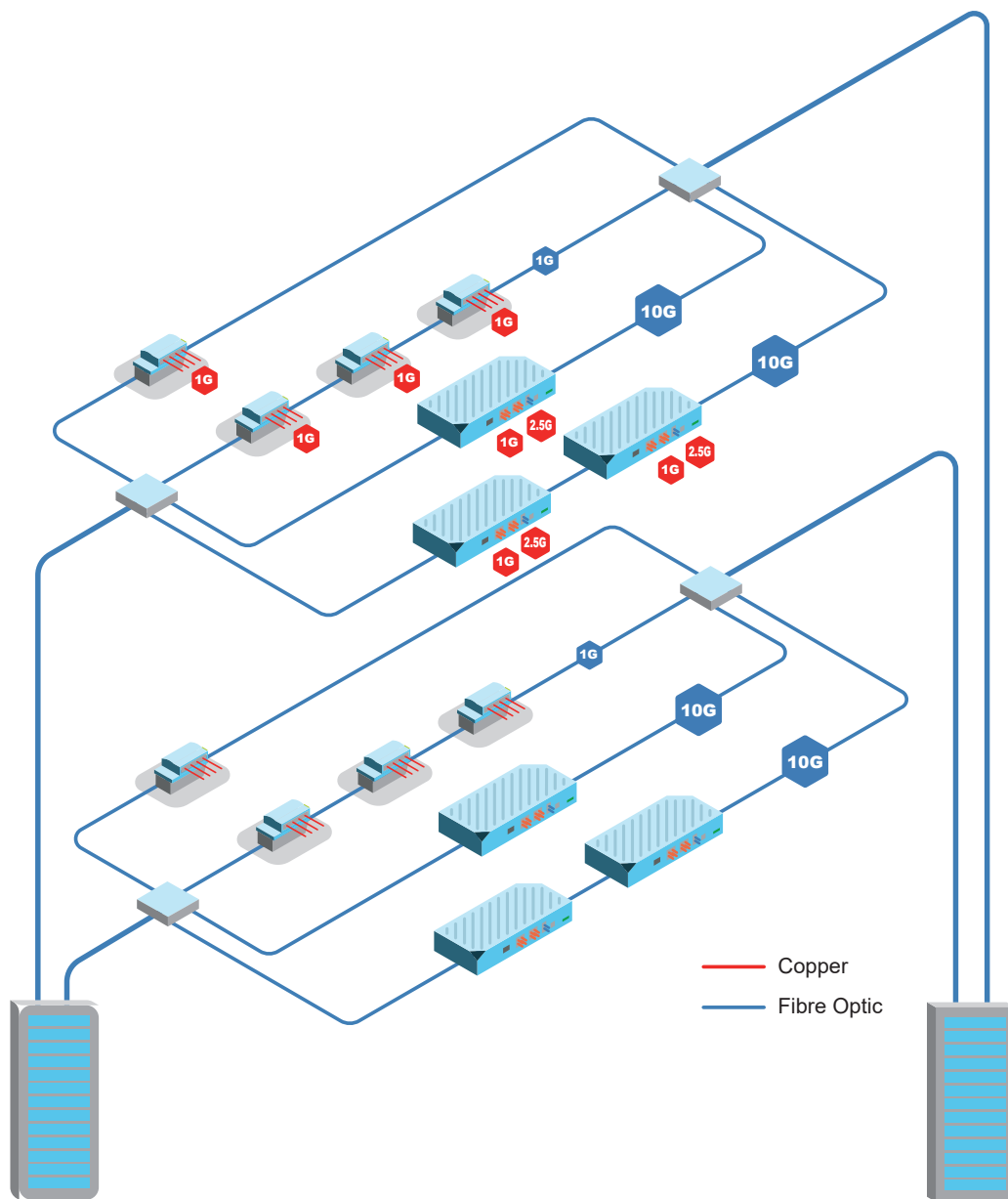
	1998	2016	2016	2018
	1 Gigabit IEEE 802.3ab	2.5 Gigabit IEEE 802.3bz	5 Gigabit IEEE 802.3bz	10 Gigabit IEEE 802.3an
Frequency	100Mhz	100Mhz	200 Mhz	400Mhz
Cable type	CAT5e	CAT5e	CAT6	CAT6A
Distance	100 m	100 m	100 m	100 m

LANactive FTTO & DICE

The XGigaSwitch DICE (Digital Ceiling) is an ideal extension of FTTO networks to provide more bandwidth and more power to the increasing number of connected devices in a Local Area Network. It provides more connectivity in places where it is needed - in the Digital Ceiling. Based on a future-proof fibre infrastructure only a minimum of cabling volume is necessary to connect the DICE switch. In combination with smart mounting options, the DICE switch can be used in multiple installation scenarios.

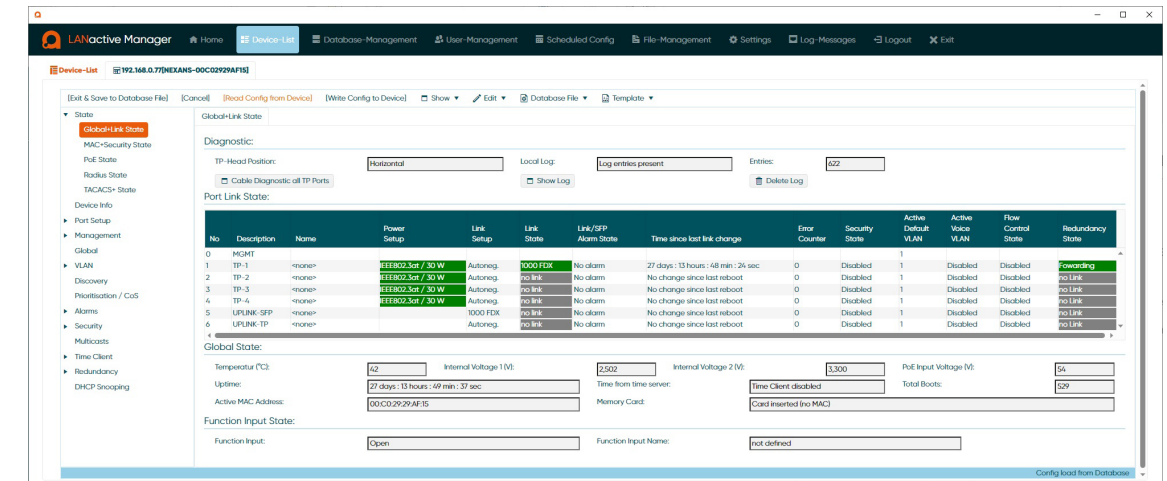
Benefits

- Scalable LAN infrastructure
- Future-proof technology
- Extended redundancy
- Fully automated with Zero-Touch Configuration
- Space saving installation
- Savings in OPEX & CAPEX



LANactive Manager

LANactive Manager provides an easy, comfortable and secure solution for configuration, management and supervision of Aginode LANactive switches.



All LANactive switches (FTTO, DICE and Industry) can be managed via LANactive Manager.

Accurate view with intelligent device lists

Categories can be defined according to a tree structure and devices can be assigned using Drag & Drop. Any number of device lists can be created, arranged in different groups, sorted by IP address, MAC address, device name and software version, or imported from environments such as XML, CSV or from a database. Counting and labelling according to category are also possible, along with various viewing options and creation of Excel or XML inventory lists. The device list is automatically updated through polling and changes are highlighted.

Software Packages

LANactive Manager is available as a standalone version and used as a desktop application for single or multiple users. This installation is perfect for on-site network engineers who are connected locally.

LANactive Manager Client-Controller

LANactive Manager Client-Controller is a client-controller software architecture that is optimised for large installations with hundreds or thousands of switches. It allows simultaneous access from different clients via client software or web interface and supports the fully automated configuration process Zero-Touch Configuration. The LANactive Manager Client-Controller is available for Windows and Linux operating systems.

Zero-Touch Configuration

Aginode LANactive Zero-Touch Configuration is a contemporary way of designing, building and operating networks with minimum effort. The use of LANactive Manager together with LANactive switches ensures networks are flexible and scalable.

Product overview

XGigaSwitch DICE 8TP 2SFP+ AC

The new LANactive XGigaSwitch is optimised for supporting Wireless LAN infrastructures. Based on MultiGigabit copper and 10 Gigabit SFP+ interfaces the switch is able to support the bandwidth required by the latest Wireless LAN standards.

- 2 Uplink Ports (SFP+) and 8 Access Ports (RJ45)
- Power over Ethernet (PoE++) up to 90Watts per port
- Energy Efficient Ethernet
- Memory Card Slot
- Wide Input Voltage Range 90 ... 264V AC



Reference	Description
88306800	XGigaSwitch 8TP 2SFP+ AC
	User Ports (RJ45): 4x 1000Base-T and 4x 2.5GBase-T
	Uplink Ports (SFP+): 2x 1/10Gbps
	Power Cable/Connector: 1,5m with Power Connector (CEE 7/4)

XGigaSwitch DICE 8TP 2SFP+ DC

The new LANactive XGigaSwitch is optimised for supporting Wireless LAN infrastructures. Based on MultiGigabit copper and 10 Gigabit SFP+ interfaces the switch is able to support the bandwidth required by the latest Wireless LAN standards.

- 2 Uplink Ports (SFP+) and 8 Access Ports (RJ45)
- Power over Ethernet (PoE++) up to 90Watts per port
- Energy Efficient Ethernet
- Memory Card Slot
- Wide Input Voltage Range 46 ... 57V DC

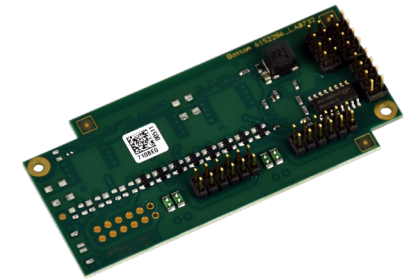


Reference	Description
88306801	XGigaSwitch DICE 8TP 2SFP+ DC
	User Ports (RJ45): 4x 1000Base-T and 4x 2.5GBase-T
	Uplink Ports (SFP+): 2x 1/10Gbps
	Power Cable/Connector: 3-pin connector with plug-in screw terminal

Product overview

iOption PoE+ or PoE++

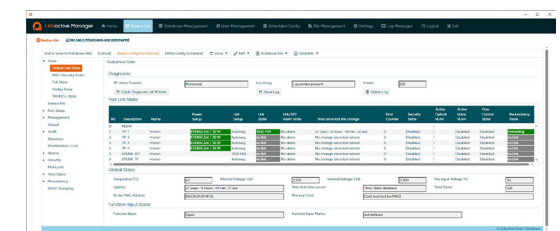
The latest Power over Ethernet standard IEEE802.3bt enables the remote powering with up to 90 Watts per port. Equipment like Wireless LAN Access Points, IP-Cameras, Connected Lighting or Smart Building Systems can be supplied with power from the switch directly. The Power over Ethernet functionality can be parametered, controlled and monitored via management.



Reference	Description
88301604	iOption PoE+ 6/8P-30W, 8x PoE+ (IEEE802.3at) 8x PoE+
88301666	iOption PoE++ 6/8P-90W, 8x PoE++ (IEEE802.3bt) 8x PoE++

LANactive Manager

- Stand-Alone version and Client-Controller version
- Zero-Touch Configuration
- Extended management for firmware and configuration changes
- Different access levels, roles and user specified device lists
- Logging and alarming functionality
- Free of charge evaluation version



Reference	Description
88301908	LANactive Manager Single User Licence
88301909	LANactive Manager Company Licence
88301920	LANactive Manager Controller Licence

Memory Cards

Aginode memory cards have an integrated and unique MAC address that is taken over by the switch. The memory cards are used as backup location for the current switch configuration and firmware.



Reference	Description
88300692	SD Memory Card with MAC-Address Delivery: Separately in plastic case
88300696	SD Memory Card with MAC-Address plugged Delivery: Pre-installed in the switch

Product overview

Transceiver

Aginode Small Form Factor Pluggable (SFP+) transceivers are designed for operation in Aginode LANactive switches. Aginode SFP+ transceivers are compliant with SFP MSA (Multi-Source Agreement) and SFF-8472. All SFPs meet Class I Laser Safety requirements in accordance with IEC-825.

For a detailed specification of Aginode SFP+ modules, please refer to the datasheet.



Reference	Description
88646390	Aginode SFP+, 10GBase-SR, 850nm MM Ethernet Standard: 10GBase-SR Fibre Type: Multimode Fibre
88646391	Aginode SFP+, 10GBase-SR, 850nm MM Ethernet Standard: 10GBase-SR Fibre Type: Multimode Fibre
88646015	Aginode SFP+, 10GBase-SR, 850nm MM Ethernet Standard: 10GBase-SR Fibre Type: Multimode Fibre
88646016	Aginode SFP+, 10GBase-SR, 850nm MM Ethernet Standard: 10GBase-SR Fibre Type: Multimode Fibre

Console Cable

The console port on Aginode switches allows access to the command line interface of the switch and can be used to configure the switch on site and/or to retrieve its status. Configuration via console port provides the same functionality as configuration via Telnet or SSH.

- For connecting the Aginode switch to a PC or a notebook a system-specific adapter cable is required which is terminated on the PC/notebook side with an USB connector.



Reference	Description
88300716	RJ45 to USB Adapter for Serial Console - Connector A: RJ45 - Connector B: USB

Product overview

Desktop Power Supply 54VDC

- Power Supply for Aginode XGigaSwitch series
- Full PoE (IEEE 802.3af, at and bt) compatible
- Fanless design
- Output Power: 65W or 240 Watts
- Control-LED
- Primary Connection (100-240V AC) via C14 connector
- Secondary connection (54V DC):
- Three core wire H03VV cord, 1m, with moulded 3-pin connector
- Mutual connection of function earth
- Low Voltage Directive „Protection Class I“



Reference	Description
88646283	Desktop Power Supply 54VDC/240W
88646077	Power Supply with Schuko 54VDC/65W

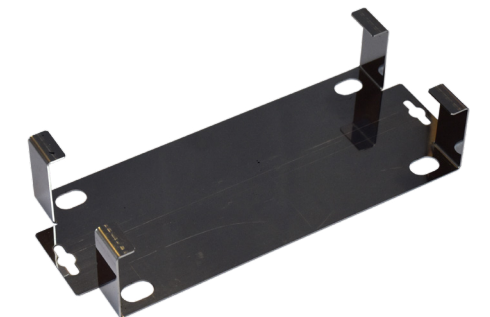
Desktop Power Supply 54VDC

Reference	Description
88646208	Power cable, H05VV-F 3G1, 2m, black Site A: CEE 7/4 Site B: IEC-Lock C13



Mounting Kit for Power Supply 240W

Reference	Description
88646214	Power cable, H05VV-F 3G1, 2m, black Mounting Kit for Power Supply 240W, stainless steel, for 88646283



Product overview

19" Mounting Kit

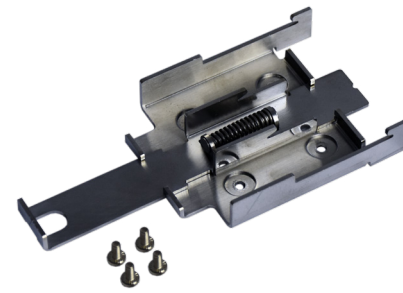
The 19" Mounting Kit allows an easy installation of the XGigaSwitch DICE in 19" racks. The brackets are mounted sideways.



Reference	Description
88646402	XGigaSwitch DICE 19" Mounting Kit Colour: Deep Black, like RAL 9005

DIN-Rail Mounting Kit

The DIN-Rail Mounting Kit allows an easy installation of the XGigaSwitch DICE on standard DIN-Rails. The clip is fixed on the backside of the switch.



Reference	Description
88306811	XGigaSwitch DIN-Rail Mounting Kit Colour: Unpainted, stainless-steel

Installation example



Product overview

Mounting Plate

The Mounting Plate allows an easy and smart installation of the LANactive XGigaSwitch DICE. It can be mounted on walls or below the ceiling and has an integrated fixing mechanism for the active switch. After installation of the plate the XGigaSwitch DICE can be mounted toolless. The integrated strain-relief allows a safe and protected installation of copper or fibre optic cables.



Reference	Description
88646400	XGigaSwitch DICE Mounting Plate Colour: Unpainted, stainless-steel Dimensions (W x H x D): 334 x 140 x 21mm

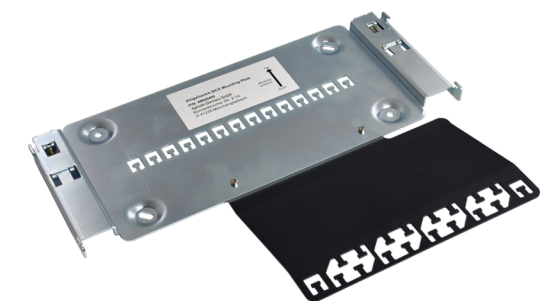
Strain-relief

In case the integrated strain-relief is not sufficient, an external additional strain-relief can be added to fix the cables in front of the XGigaSwitch DICE.



Reference	Description
88646400	XGigaSwitch DICE Strain-Relief Colour: Unpainted, stainless-steel Dimensions (W x H x D): 197 x 150 x 24mm

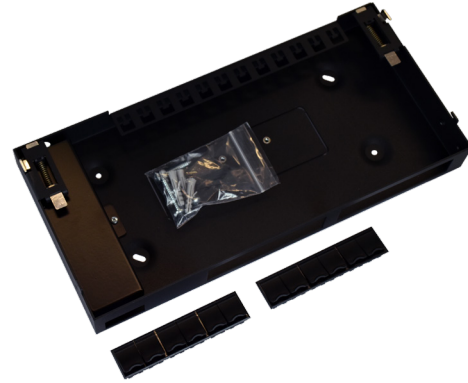
Installation examples



Product overview

DICE Mounting Frame

The DICE Mounting Frame allows the installation and termination of the needed network and power cables. It offers the installation of up to 12 snap-in connectors terminating copper and/or fibre cables. It is also possible to connect the power cabling via WAGO or Wieland connector. After installation of the DICE Mounting Frame the XGigaSwitch DICE can be mounted toolless.



Reference	Description
88646470	DICE Mounting Frame Colour: Deep black, like RAL 9005 Dimensions (W x H x D): 335 x 170 x 40mm

DICE Mounting Frame Cable Protection

To protect the cabling for unauthorised access the Cable Protection can be used.



Reference	Description
88646472	DICE Mounting Frame Cable Protection Colour: Deep black, like RAL 9005 Dimensions (W x H x D): 337 x 157 x 90 mm

Installation examples

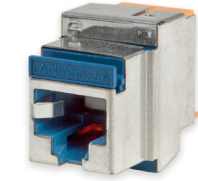


Product overview

LANmark CAT6/CAT6A Snap-In Connector

Via LANmark Snap-In CAT6 and CAT6A connectors twisted pair cabling can be terminated in the DICE Mounting Frame.

The LANmark connectors are fully compliant with TIA and ISO cabling standards and support PoE++ applications with up to 90 Watts over 4 pairs.



Reference	Description
N420.666	LANmark-6 Evo Snap-In Connector CAT6
N420.66A	LANmark-6A Evo Snap-In Connector CAT6

LANmark-OF Snap-In Adaptor

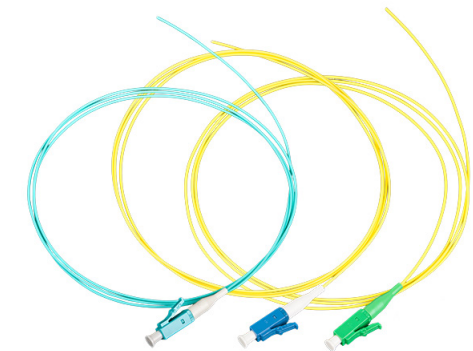
The LANmark-OF Duplex Snap-In Adaptor is a timesaving option to terminate fibre optical cabling in the DICE Mounting Frame.



Reference	Description
N205.617	LANmark-OF Multimode Duplex LC Snap-In Adaptor Colour: Aqua Connector Type: Multimode LC
N205.627	LANmark-OF Singlemode Duplex LC Snap-In Adaptor Colour: Blue Connector Type: Singlemode LC/PC

LANmark-OF Pigtails

LANmark-OF Maxistrip Pigtails for connection in the DICE Mounting Frame. The Maxistrip pigtail can be stripped up to 100cm in one action and are compatible with LANmark-OF splice cassettes with heat shrink and aluminium protectors.

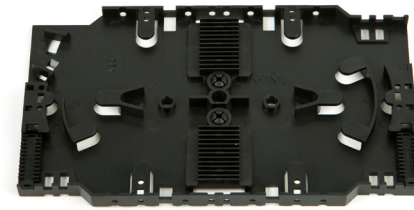


Reference	Description
N121.5MLA	LANmark-OF Pigtail LC OM3 Maxistrip LSZH 50/125 Length: 1m, Colour: Aqua, Fibre Type: Multimode OM3, Connector Type: LC
N121.4MLY	LANmark-OF Pigtail LC/UPC Singlemode Maxistrip LSZH 9/125 Length: 1m, Colour: Yellow, Fibre Type: Singlemode OS2, Connector Type: LC/PC

Product overview

LANmark-OF Splice Cassette

The LANmark-OT Splice Cassette is designed for the management of up to 12 splices with heat shrink protectors.



Reference	Description
N890.095	Splice Cassette Heat Shrink Protectors Dimensions (B x H x T): 155 x 92 x 8.5mm
N890.096	Splice Cassette Aluminum Protectors Dimensions (B x H x T): 155 x 92 x 8.5mm
N890.097	Splice Cassette Cover Dimensions (B x H x T): 155 x 92 x 2mm

WAGO and Wieland Snap-In Power Connector

Via WAGO or Wieland Snap-In Power connectors the power connection for the XGigaSwitch DICE can be terminated in the DICE Mounting Frame.



Reference	Description
88646475	WAGO WINSTA Midi Snap-In Connector Core Size: 0.5 ... 4mm ² Stripping length: 9mm
88646473	Wieland GST18i3 Snap-In Connector Core Size: 0.5 ... 2.5mm ² Stripping length: 9mm

Product overview

WAGO and Wieland Power Connecting Cable

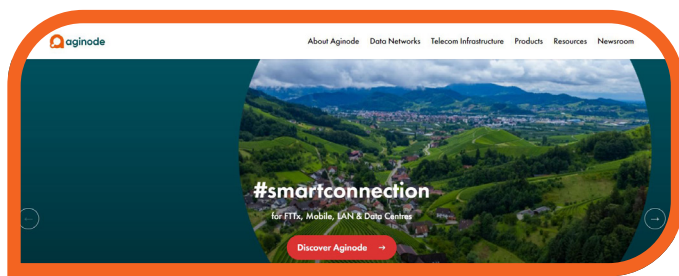
Power Cable with WAGO or Wieland connector.

Reference	Description
88306814	WAGO WINSTA Connecting Cable AC Length: 0.3m Site A: WAGO WINSTA Midi Plug Site B: C13
88306816	Wieland GST18i3 Connecting Cable AC Length: 0.3m Site A: Wieland GST18i3 Plug Site B: C13
88306815	WAGO WINSTA Connecting Cable DC Length: 0.3m Site A: WAGO WINSTA Midi Plug Site B: 3-Pin
88306817	Wieland GST18i3 Connecting Cable DC Length: 0.3m Site A: Wieland GST18i3 Plug Site B: 3-Pin

#smartconnection



Connect via **LinkedIn**



Learn more on **YouTube**



Visit **www.aginode.net**

Contact us via
info@aginode.net

www.aginode.net

