

Field Installable Splice-On LC Installation Procedure For 900 / 250 Micron Fiber



Safety Reminders

This product has been designed and manufactured to assure personal safety. Improper operation can result in bodily injury and damage to the product. Please read and observe all warning instructions given in this installation procedure.

- ★ **Wear safety glasses** before handling optical fiber to protect the eyes. Small pieces of glass fibers are very sharp and might get into the eyes and injure them.
- ★ **Never look into** the end of a connector or an optical fiber which may have a laser coupled to it. Laser light can damage your eyes. Please note that some laser light is not visible.
- ★ **Alcohol is flammable**, causes skin irritation and is harmful if swallowed, or inhaled. Keep alcohol away from heat, sparks, skin and avoid contact with eyes.
- ★ In the case of working at heights, be careful not to drop any tools.

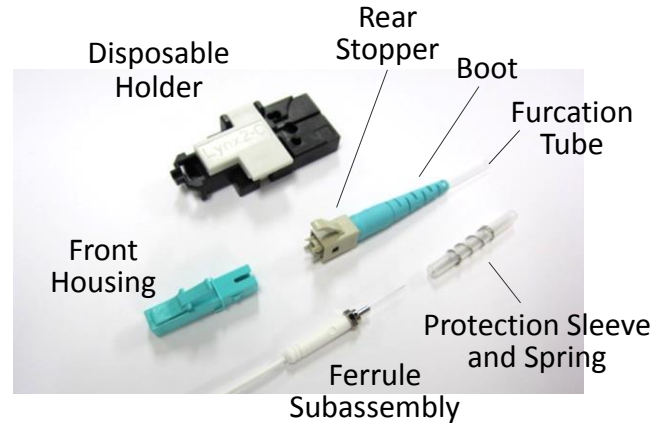


Precautions

1. Improper assembly will result in a loss of performance. **Please read instructions** given in this installation procedure and the operational manual of the fusion splicer.
2. The product is sensitive to dirt or dust. Do not remove the LC ferrule subassembly from its package **until it is to be used**.
3. The connector loss will be influenced by the quality of the cleave. Use a cleaver with a clean, sharp blade.

Connector Parts

1. Rear Stopper / Boot / Furcation Tube Subassembly
2. Protection Sleeve and Spring
3. Ferrule Subassembly
4. Front Housing



The following tools / supplies are not provided.

- Fusion splicer
- Fiber cleaver
- Fiber holder (fiber side)
- Alcohol and lint free wipes

Tool Recommendations

Mass Fusion Splicer:
Sumitomo Q101-CA



Fiber Cleaver:
Sumitomo FC-6S-C



Splice Holder (Fiber Side)

900 Micron

LYNX2-UML-S

FHS-09



250 Micron

FHS-025

LYNX2-S-LB5



Jacket Remover:
JU-M03

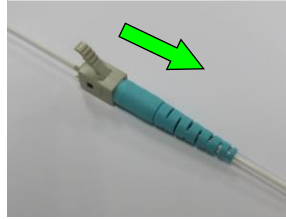


Nexans Data Center Solutions
Phone: 919-617-6500
nds.techsupport@nexans.com

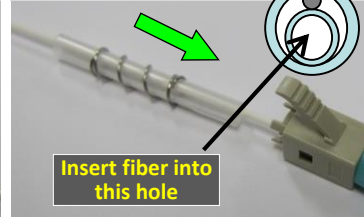
Splice-On LC Installation Procedure

These instructions use a T-Q101-CA (T-71C) splicer. Instructions for other splicers may differ slightly. Follow splicer operational manual.

(1) Slide Rear Parts onto the fiber.



(2) Slide Protection Sleeve onto the fiber.



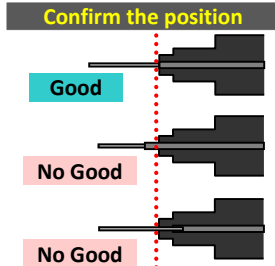
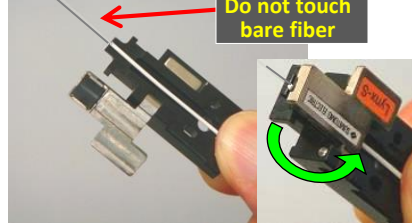
(3) Remove approx. 35mm of the fiber coating, down to 0.125mm. (JR-M03)



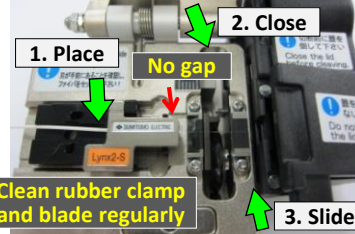
(4) Clean the fiber with lint-free cleaning wipe.



(5) Set the fiber on the holder (for left side of splicer).



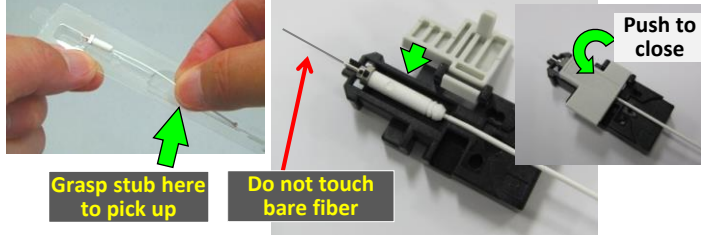
(6) Cleave the fiber (FC-6S)



(7) Set fiber holder on the splicer (left side).



(8) Open plastic holder, and set the stub inside.

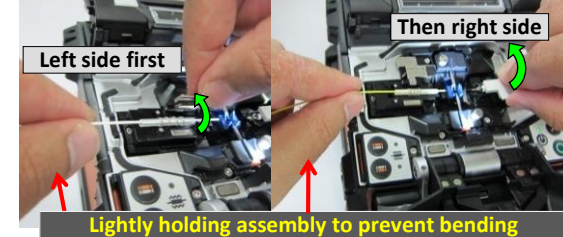


(9) Set stub holder on the splicer (right side).

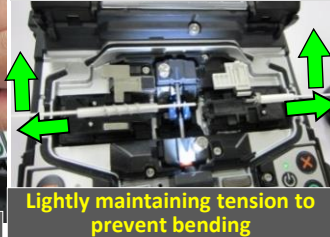


(10) Choose correct program & fusion splice. If the position of the fiber is wrong, set the fiber or stub again.

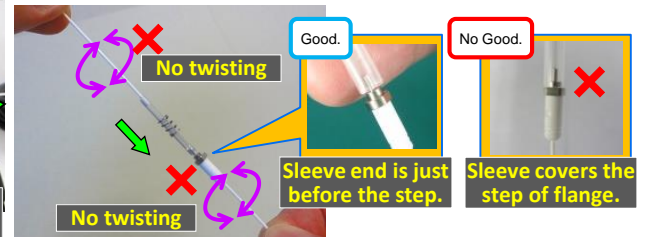
(11) Open the stub and fiber holders.



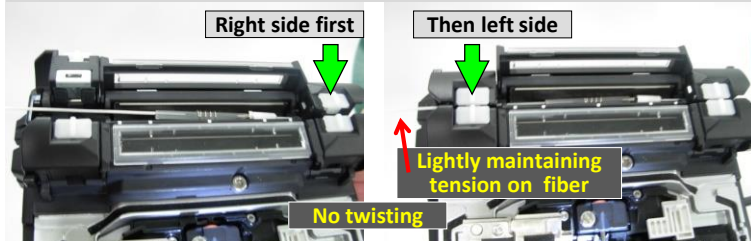
(12) Pick up the spliced fiber.



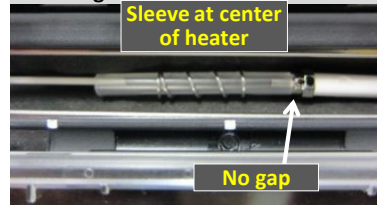
(13) Slide Protection until it covers the projection of the flange.



(14) Set Sleeve into the heater.



(15) Confirm the position before heating.



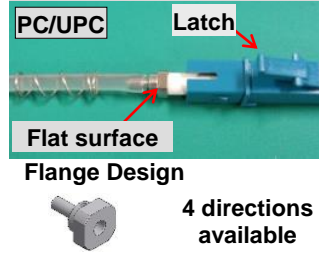
(16) Heat Protection Sleeve.



(17) Pick up Sleeve.



(18) Align Latch with flat surface



(19) Put the front housing into the rear stopper.

